



The unisex long-sleeve polo

Medium Fit

XXS → 3XL

240 GSM

Description

Flat rib-knit collar
Heavy single-jersey back neck tape
Two-button front placket with buttons in matching colour
Set-in sleeves
1x1 rib at sleeve cuffs
Single-needle topstitching at shoulder seams
Side slits with heavy single-jersey facing
Narrow twin-needle topstitching at hem

Composition

Shell - Piqué
100% Cotton - Organic Ring Spun Combed - 240.0 GSM
Panel washed

Care instruction

Wash similar colours together, no ironing on print, wash and iron inside out.



Country of origin

Weaving : Bangladesh
Dyeing : Bangladesh
Assembly : Bangladesh

Whites



White
C001



Natural
Raw
C054

Colors



Black
C002



French
Navy
C727



Burgundy
C244



Stargazer
C702



Glazed
Green
C036



Khaki
C223



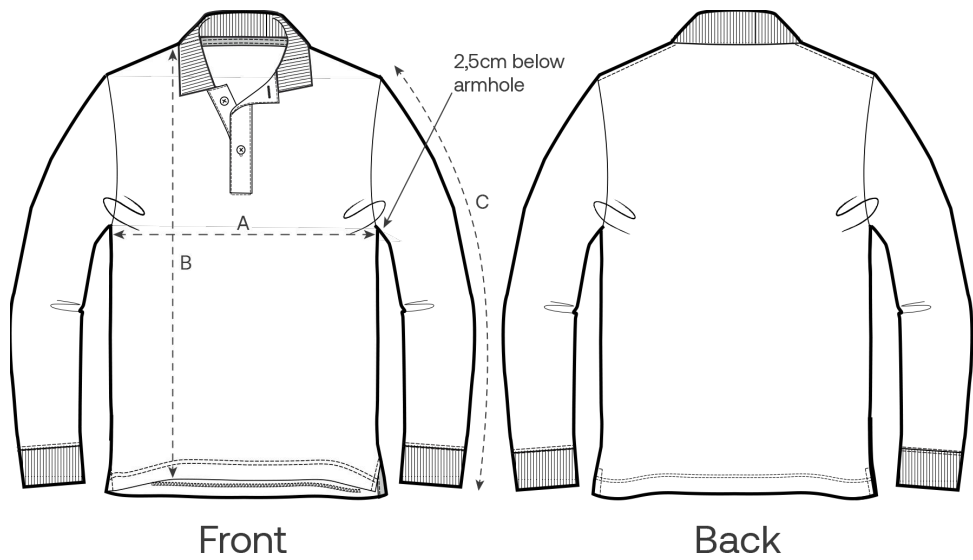
Anthracite
C253

Essential Heathers



Heather
Grey
C250

Size Guide



| Measurement in cm | XXS | XS | S | M | L | XL | XXL | 3XL |
|-------------------|------|------|------|------|------|------|------|------|
| A - Half Chest | 45.5 | 47.5 | 50.5 | 53.5 | 56.5 | 59.5 | 63.5 | 67.5 |
| B - Body Length | 64 | 68 | 70 | 72 | 74 | 76 | 78 | 80 |
| C - Sleeve Length | 58 | 60 | 64.5 | 67 | 69 | 69.5 | 70 | 70 |

Packing

| Sizes | XXS | XS | S | M | L | XL | XXL | 3XL |
|--------------|-----|----|----|----|----|----|-----|-----|
| Pieces / bag | 5 | 5 | 5 | 5 | 5 | 5 | 5 | 5 |
| Pieces / box | 25 | 50 | 50 | 50 | 50 | 50 | 50 | 25 |

Environmental impact

Please note that the table below shows data for an adult in size M.

| Carbon emission in Kg CO2eq | Natural Raw | Eco-heather | Whites & Colours | Heathers* |
|-----------------------------------|-------------|-------------|------------------|-----------|
| From cradle to gate ¹ | 3.68 | - | 4.56 | 4.63 |
| From cradle to grave ² | 6.87 | - | 7.76 | 7.83 |

| Water usage in m³ | Natural Raw | Eco-heather | Whites & Colours | Heathers* |
|-----------------------------------|-------------|-------------|------------------|-----------|
| From cradle to gate ¹ | 1.53 | - | 2.37 | 2.55 |
| From cradle to grave ² | 3.59 | - | 4.44 | 4.61 |

1 - From the extraction of raw materials to the point it leaves the manufacturer. 2 - From the extraction of raw materials to the product end-of-life. * Except Heather Haze